

RIVERHOMES

75 Riverview Grove
Chiswick

£1,195,000
Exchanged



75 Riverview Grove Chiswick

Description

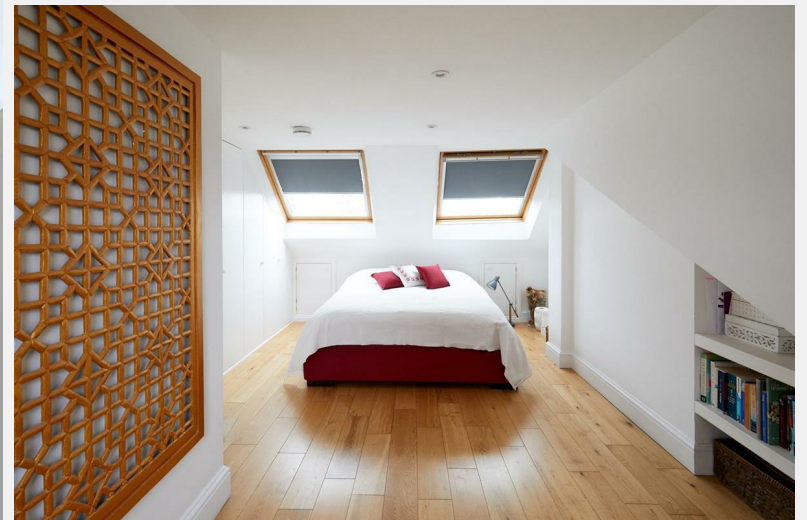
An excellent opportunity to purchase this beautifully modernised period family home on one of Strand on the Green's most desirable roads a short walk from the River Thames. The property enjoys an abundance of natural light and briefly comprises of; open-plan reception / dining room, modern fitted kitchen and utility room to the ground floor, three bedrooms and modern family bathroom to the first floor and a generous master suite with en-suite shower room to the second floor. The property boasts the potential

for expansion to the rear subject to the usual planning consents along with a private west-facing rear garden. Riverview Grove is ideally located for Strand on the Green and Grove Park Primary schools and the local amenities that Strand on the Green has to offer. Chiswick National Rail Station and Gunnersbury tube station are both within walking distance, while the motorist is well served by the A4/M4 for links in and out of town. EPC rating TBC.

KEY FEATURES

- Grove Park Primary school catchment area
- Close to the River Thames
- 1,109 sq. ft.
- Four bedrooms
- Beautifully modernised
- Excellent transport connections
- Strand on the Green schools catchment area



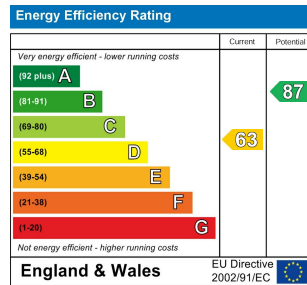


75 Riverview Grove Chiswick

West London Branch
28 Thames Road
London
W4 3RJ

020 8996 0600
www.riverhomes.co.uk

ENERGY PERFORMANCE CERTIFICATE



KEY INFORMATION

Local Authority: London Borough of
Hounslow

Internal Area: 1109.00 sq ft

Garden Area: acre(s)

No of Bedrooms: 4



World Waterside Ltd trading as riverhomes for themselves and its clients give notice that 1: They are not authorised to make or give any representations or warranties in relation to the property either here or elsewhere, either on their own behalf or on behalf of their client or otherwise. 2: These particulars do not form part of any offer or contract and must not be relied upon as statements or representations of fact. Any areas, measurements or distances are approximate. The text, photographs and plans are for guidance only and are not necessarily comprehensive. 3: It should not be assumed that the property has all necessary planning, building regulation or other consents and any services, equipment or facilities have not been tested. 4: Lease details, service charges, ground rent (where applicable) and council tax are given as a guide only and should be checked and confirmed by your Solicitor prior to exchange of contracts. 5: They assume no responsibility and any intending purchasers or tenants must satisfy themselves by inspection or otherwise as to the correctness of each of the statements contained within these particulars. If you require clarification of any points please contact us.